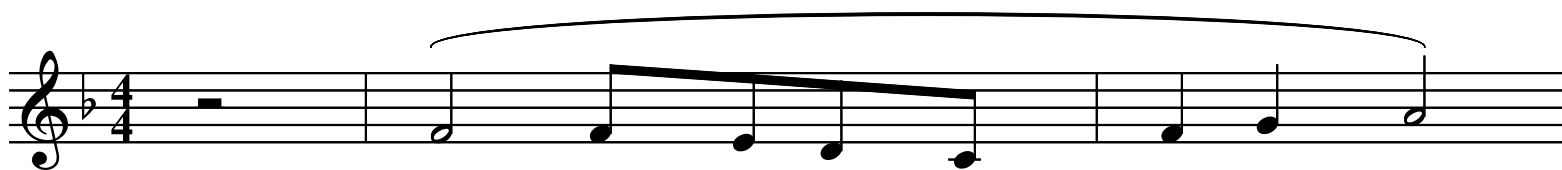
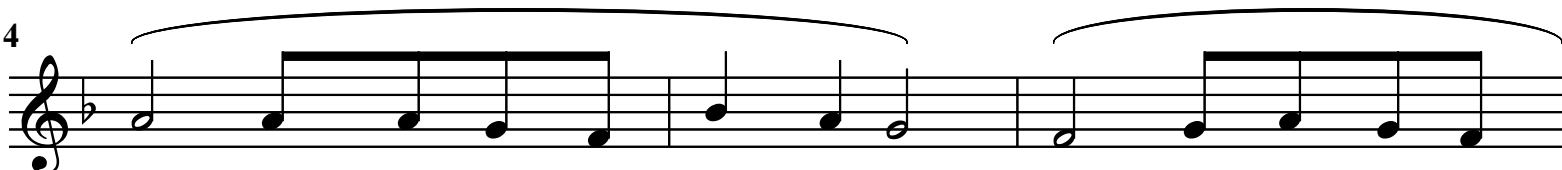


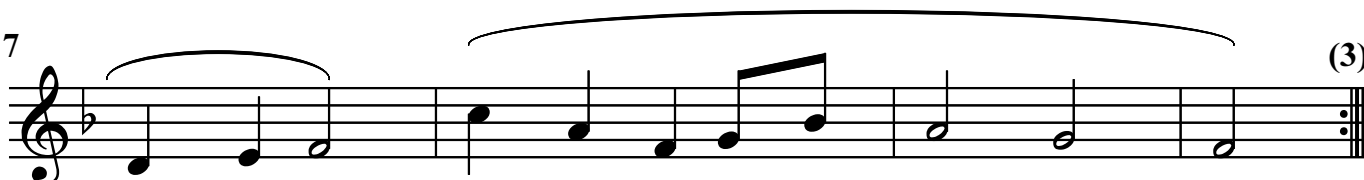
# 55 - MISSIERNA L-INTI FIS-SMEWWIET



Mis - sier - na l'in - ti fis - smew - wiet,  
Sem - mgha - na kelm - tek, O Mis - sier,  
Had - dan - na mie - ghek, O Mis - sier,



a - ra l'u - lie - dek mah - bu - bin, hawn f'da - rek hie - nja  
Bil - Hobz tie - ghek it - magh - na, ha nghi-xu mie-ghek  
ha ngham-mru f'da - rek fer - ha - nin, zom - mna fl'im-hab-ba



in - qi - muk, fa - mil - ja wah - da mig - bu - rin.  
magh - qu - din, w'int tib - qa dej - jem magh - na.  
ta' xul - xin, qalb wah - da fis - mek magh - qu - din.