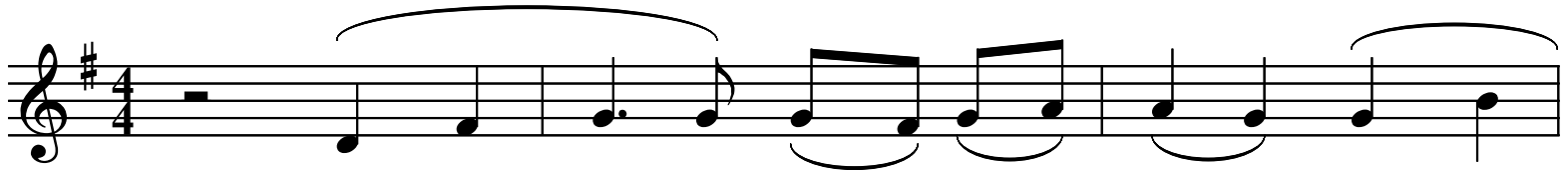
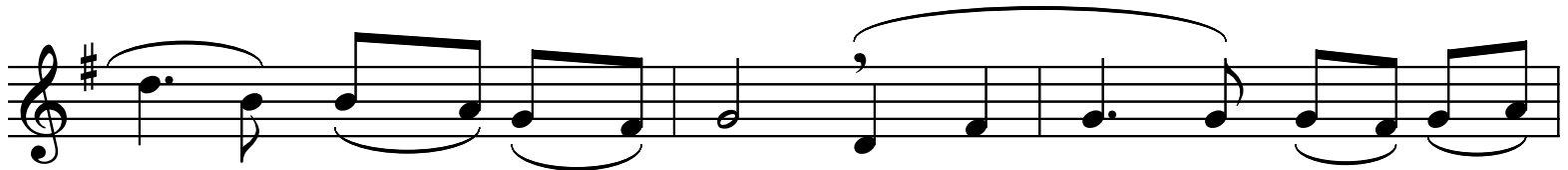


6 - F'LEJL TAX-XITWA

Arja Ngliza



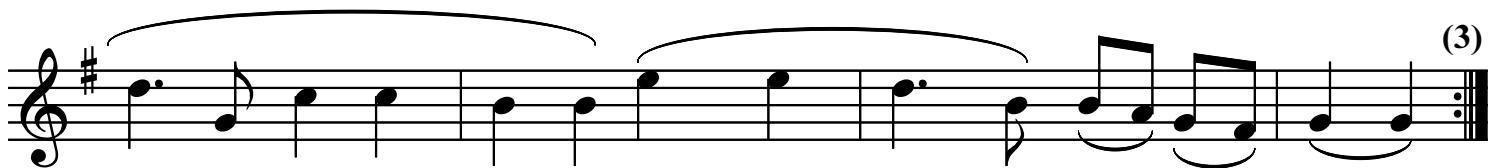
F'lejl tax - xit - wa ġew - wa Bet - lem, F'kes - a
Hu - wa ġie mis - se - ma fos - tna, Hal - la
Bhal - na be - ka, bhal - na fe - rah, Waqt li



kbi - ra, f'ghar mif - tuh, Dah - let Omm u wil - det
l'ko - bor, hal - la l'ġid, Ghix fil - fa - qar, fit - tba -
ghix fost il - bned - min. Mat - tri - qat fej - jaq u



I - ben, Qalb il - bhej - jem li sahh - nuh. Din l'Omm
- ti - ja, Ried jin - he - ba l'aq - wa Sid. Qalb il -
ghal - lem, il - Ha - bib tal - mah - qu - rin. Haj - tu



fqaj-ra hi Ma - ri - ja U Ġe - su dik it - tar - bi - ja.
- foq - ra u l'im-sejk - nin, Magh - hom kien Ġe - su ha - nin.
koll-ha fit - tig - rib, F'mew-tu wkoll fuq is - sa - lib.